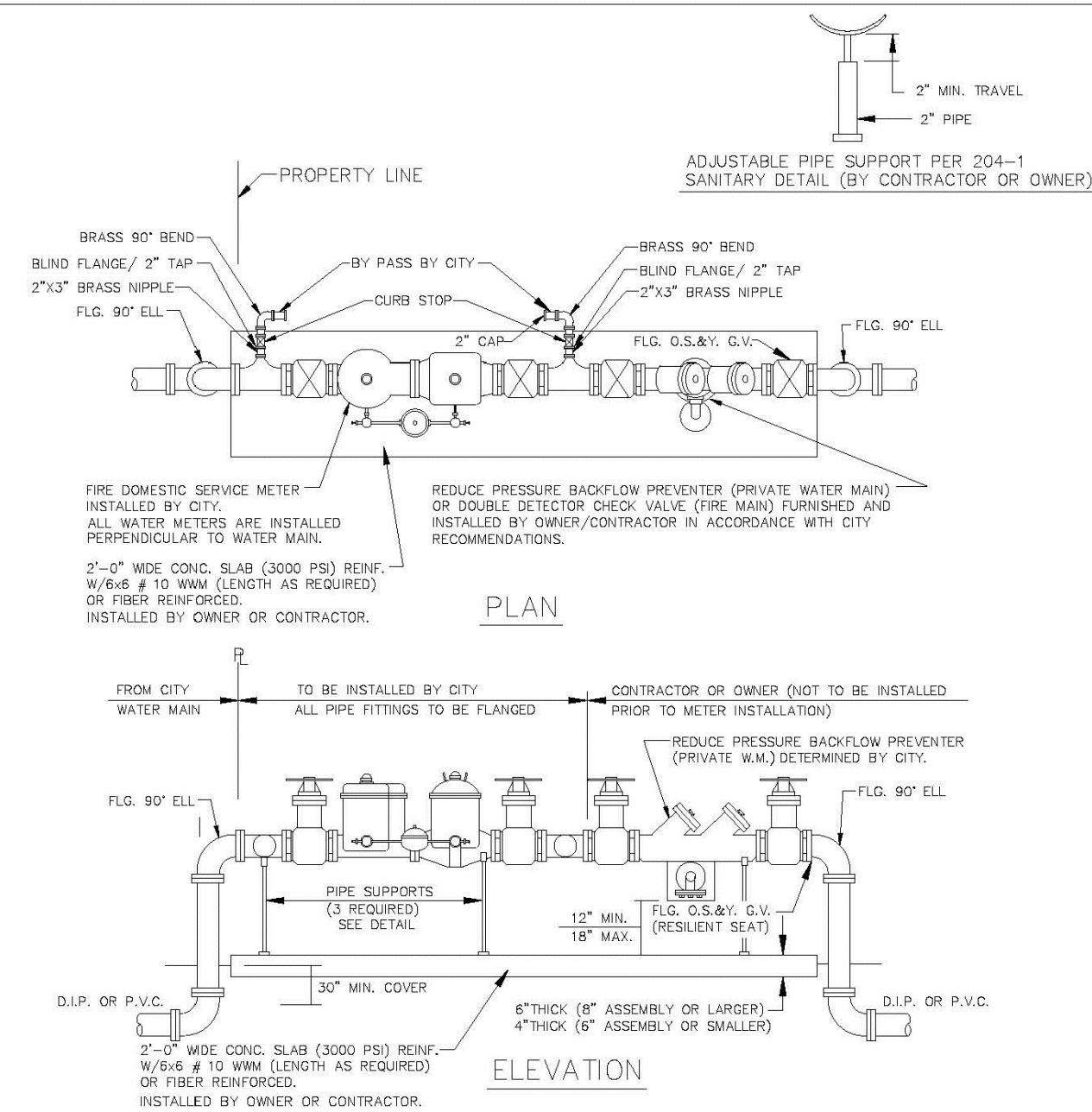


BACKFLOW PREVENTER

USE MEGALUGS AT ALL PIPE JOINTS 3" AND LARGER
PLEASE SEE METER INSTALL DIMENSION LIST ON STANDARD NO. 106-4
SMALL UNITS UNI-STRUT SUPPORT

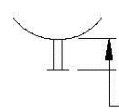
ENGINEERING STANDARDS 2022			
REVISIONS		ENGINEERING DIVISION CITY OF POMPAÑO BEACH	BACKFLOW PREVENTER
BY	DATE		
T.W.	04-2008	SCALE: N.T.S.	DATE: MAY 2022 DWG. NO. 106-1
S.S.	03-2009		
S.S.	11-2012		
S.S.	01-2013		



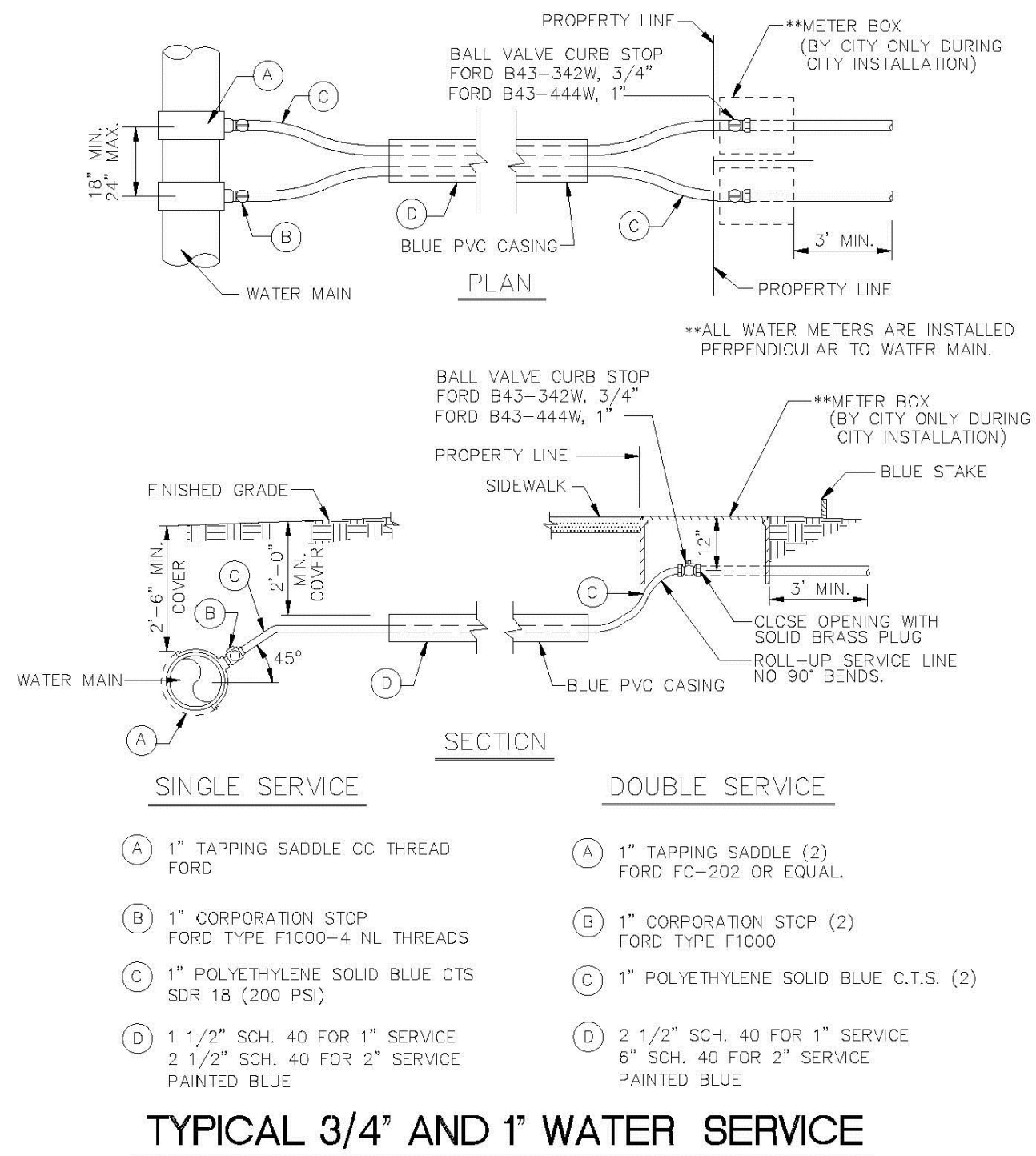
MASTER METER AND BACKFLOW DEVICE DETAILS FIRE AND DOMESTIC COMBINED SOURCE

- NOTES
1. THE BACKFLOW PREVENTER FOR THE BY-PASS SHALL BE DDCV OR RP2.
 2. PLEASE NOTE THAT WATER METERS 3" AND LARGER ARE SUBJECT TO AN APPROXIMATE ORDER LEAD TIME OF 60 TO 75 DAYS AFTER FULL PAYMENT. PLEASE CONTACT CUSTOMER SERVICE AT 954-786-4637 TO ARRANGE FOR METER PROCUREMENT AND INSTALLATION.
 3. USE MEGALUGS AT ALL PIPE JOINTS
 4. PLEASE SEE METER INSTALL DIMENSION LIST ON STANDARD NO. 106-4

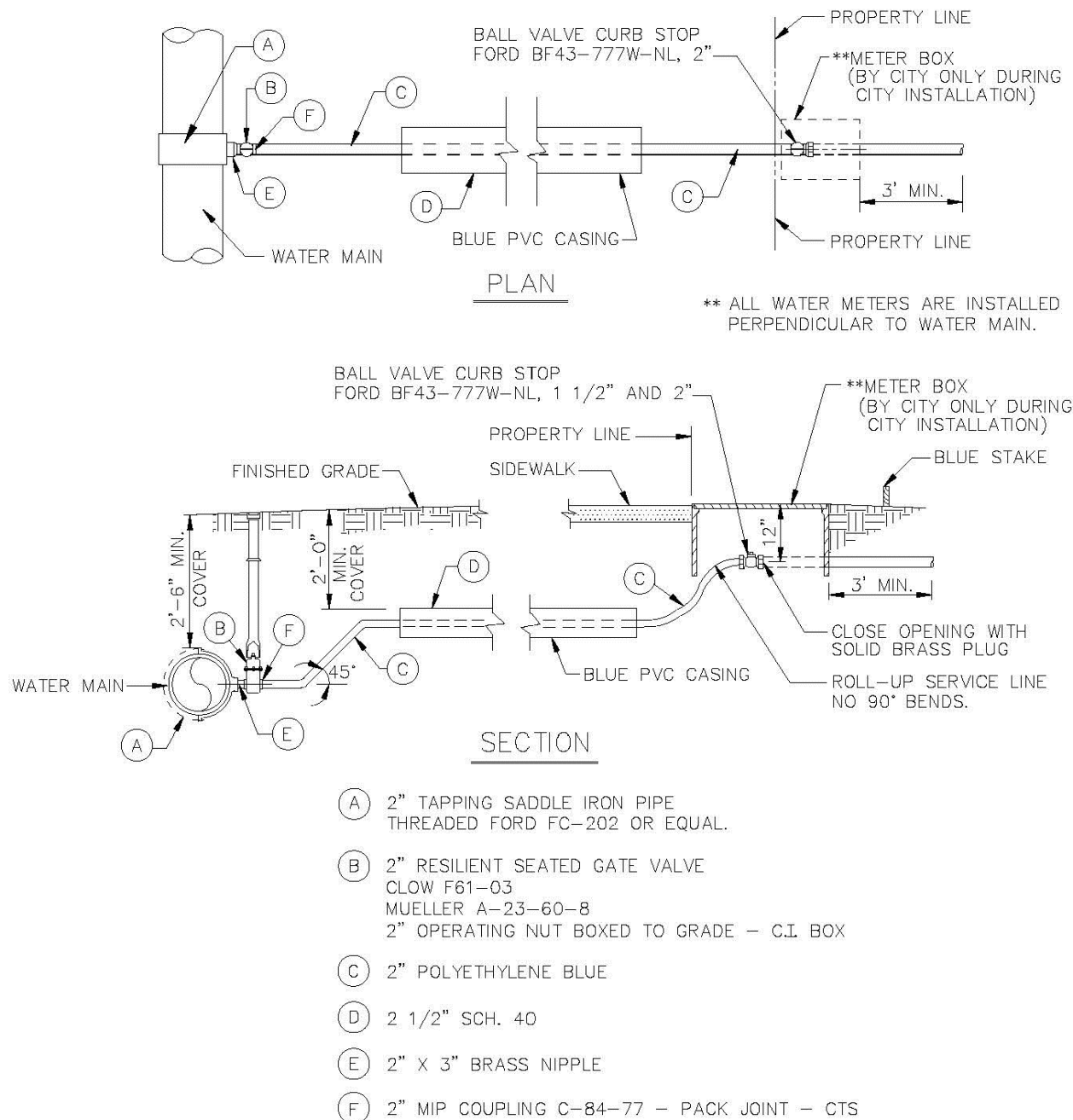
ENGINEERING STANDARDS 2022			
REVISIONS		ENGINEERING DIVISION CITY OF POMPAÑO BEACH	MASTER METER AND BACKFLOW DEVICE
BY	DATE		
S.S.	05-2011	SCALE: N.T.S.	DATE: MAY 2022 DWG. NO. 106-2
S.S.	11-2012		
S.S.	12-2013		
S.S.	11-2016		

FIRE METERS - OS & Y VALVES, GASKETS & METER							
(NEPTUNE MACH 10 Ultrasonic Meter)							
				METER w/ Strainer		TOTAL	
SIZE		VALVES (2)	GASKETS (4)			LENGTH	
3" w/ 4" X 3" Reducer **		16"	1/2"	30" **		46 1/2"	
4"		18"	1/2"	27 1/2"		46"	
6"		21"	1/2"	33"		54 1/2"	
8"		23"	1/2"	30"		53 1/2"	
10"		26"	1/2"	41"		67 1/2"	
FIRE &/or Domestic Water SERVICE METERS - TEES, OS & Y VALVES, GASKETS & METERS							
(NEPTUNE MACH 10 Ultrasonic Meter)							
				Meter w/		TOTAL	
SIZE		TEES (2)	VALVES (2)	GASKETS (6)	Strainer	LENGTH	
3" w/ 4" X 3" Reducer **		3" X 3" - 22"	16"	3/4"	30" **	68 3/4"	
4"		4" X 3" - 26"	18"	3/4"	27 1/2"	72 1/4"	
6"		6" X 4" - 32"	21"	3/4"	33"	86 3/4"	
8"		8" X 4" - 36"	23"	3/4"	30"	89 3/4"	
10"		10" X 6" - 44"	26"	3/4"	41"	111 3/4"	
*All fittings, valves and meters are flanged & all dimensions are from face of flange to face of flange.							
NOTE: PLEASE NOTE THAT WATER METERS 3" AND LARGER ARE SUBJECT TO AN APPROXIMATE ORDER LEAD TIME OF 60 TO 75 BUSINESS DAYS AFTER FULL PAYMENT. PLEASE CONTACT CUSTOMER SERVICE AT 954-786-4637 TO ARRANGE FOR METER PROCUREMENT AND INSTALLATION. LARGE METERS MUST BE AT MINIMUM ORDERED PRIOR TO INITIAL INSPECTIONS.							

ENGINEERING STANDARDS 2022			
REVISIONS		ENGINEERING DIVISION CITY OF POMPAÑO BEACH	METER INSTALL DIMENSION LIST
BY	DATE		
T.W.	02-2008	SCALE: N.T.S.	DATE: JAN. 2022 DWG. NO. 106-4
S.S.	11-2016		
A.S.	01-2022		

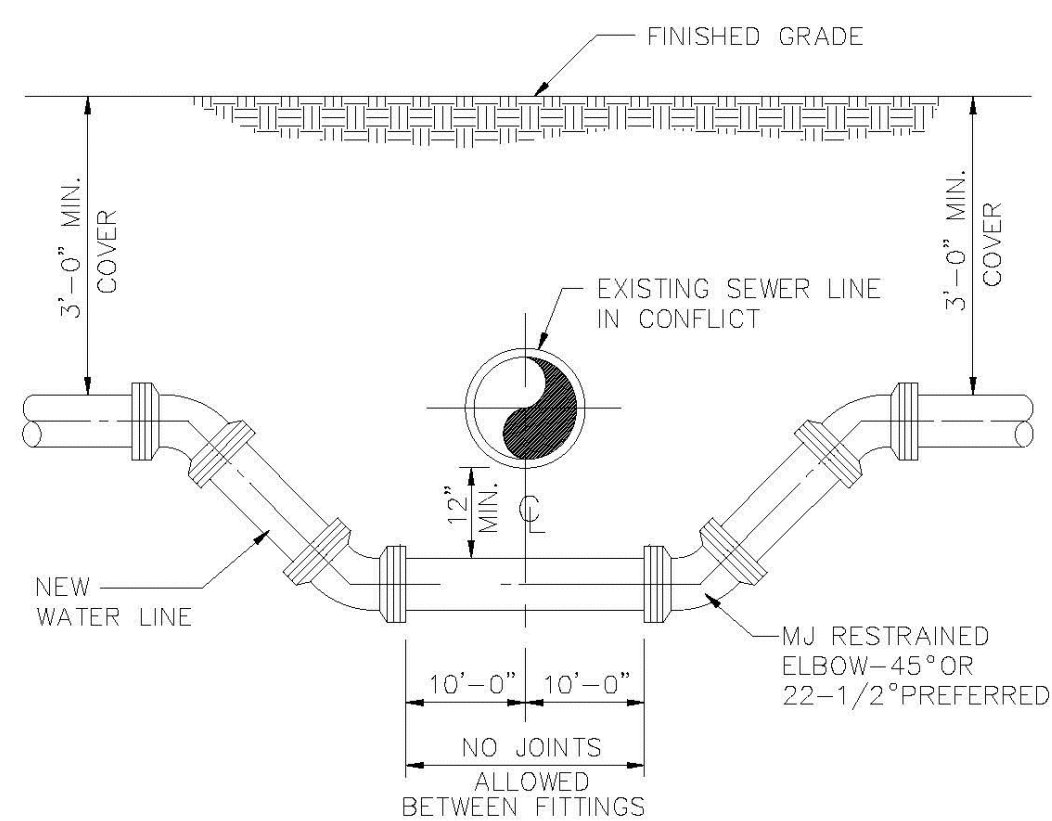


ENGINEERING STANDARDS 2022			
REVISIONS		ENGINEERING DIVISION CITY OF POMPAÑO BEACH	TYPICAL 1" WATER SERVICE
BY	DATE		
T.W.	11-2007	SCALE: N.T.S.	DATE: MAY 2022 DWG. NO. 107-1
S.S.	05-2012		
S.S.	11-2015		
A.S.	08-2021		



TYPICAL 1 1/2" AND 2" WATER SERVICE

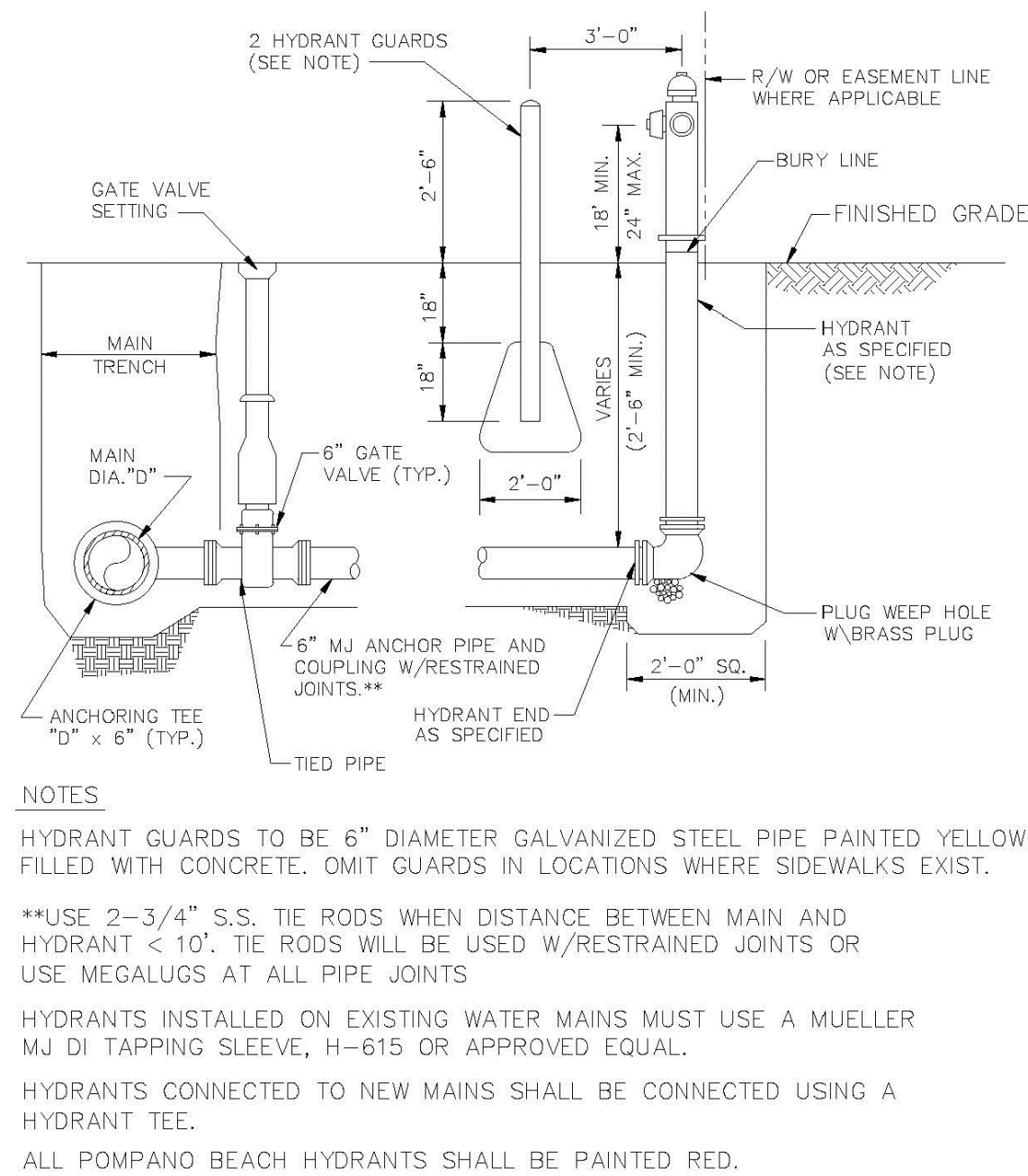
ENGINEERING STANDARDS 2022			
REVISIONS		ENGINEERING DIVISION CITY OF POMPAÑO BEACH	TYPICAL 2" WATER SERVICE
BY	DATE		
S.S.	05-2011	SCALE: N.T.S.	DATE: APRIL 2022 DWG. NO. 107-2
S.S.	05-2012		
S.S.	11-2018		
A.S.	08-2021		



TYPICAL CONFLICT DETAIL

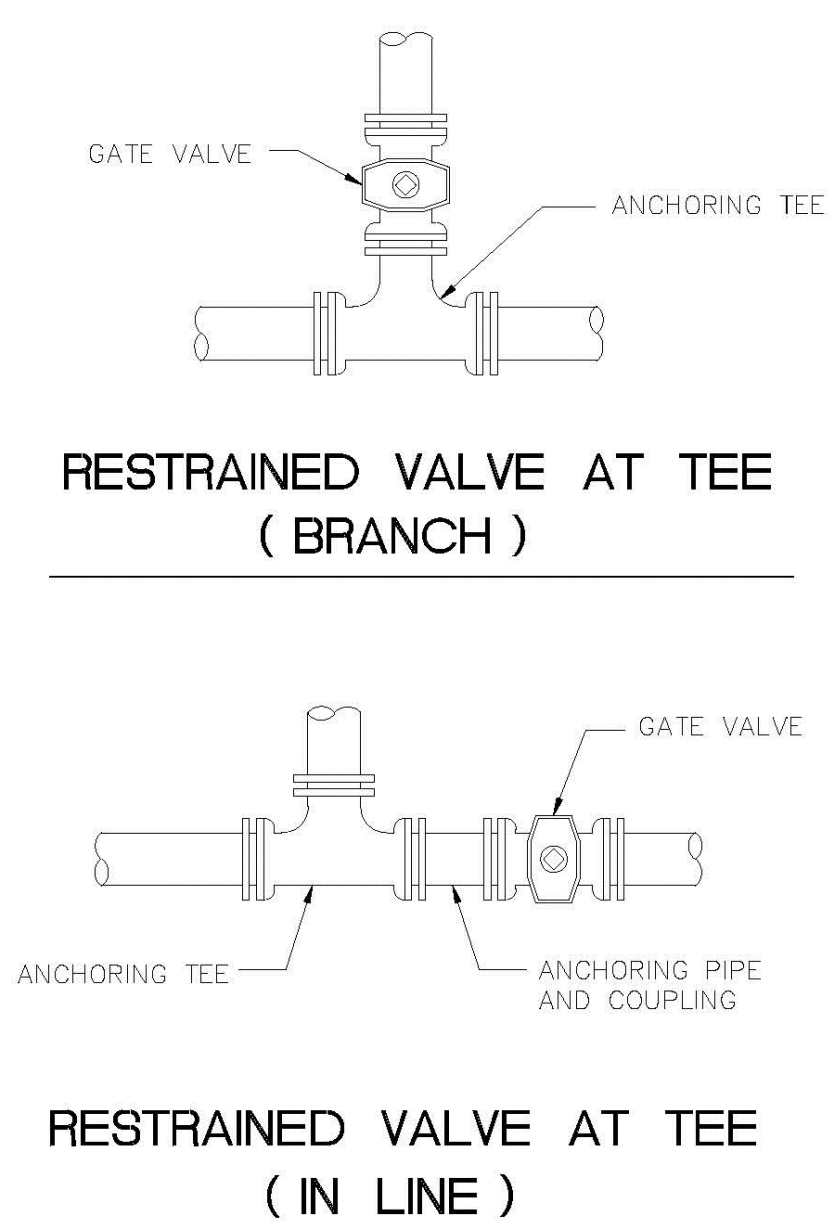
USE MEGALUGS AT ALL PIPE JOINTS
ALL D.I.P. TO BE PAINTED BLUE ON TOP HALF OF PIPE.

ENGINEERING STANDARDS 2022			
REVISIONS		ENGINEERING DIVISION CITY OF POMPAÑO BEACH	TYPICAL CONFLICT (WATER)
BY	DATE		
S.S.	04-2008	SCALE: N.T.S.	DATE: MAY 2022 DWG. NO. 108-1
S.S.	01-2012		



TYPICAL FIRE HYDRANT ASSEMBLY

ENGINEERING STANDARDS 2022			
REVISIONS		ENGINEERING DIVISION CITY OF POMPAÑO BEACH	FIRE HYDRANT ASSEMBLY
BY	DATE		
T.W.	11-2007	SCALE: N.T.S.	DATE: MAY 2022 DWG. NO. 109-1
T.W.	10-2010		
S.S.	2-2012		
S.S.	11-2012		



USE MEGALUGS AT ALL PIPE JOINTS
ALL D.I.P. TO BE PAINTED BLUE ON THE TOP HALF OF PIPE.

ENGINEERING STANDARDS 2022			
REVISIONS		ENGINEERING DIVISION CITY OF POMPAÑO BEACH	RESTRAINED VALVE AT TEE
BY	DATE		
S.S.	JUNE 2006	SCALE: N.T.S.	DATE: MAY 2022 DWG. NO. 111-1

BY	DATE	REVISIONS	FILE NAME: XXXXXXXXXX.DWG

CALFIELD & WHEELER, INC.
CIVIL ENGINEERING - LAND PLANNING
LANDSCAPE ARCHITECTURE - SURVEYING
7900 GLADES ROAD - SUITE 100
BOCA RATON, FLORIDA 33434
PHONE (561)-392-1991 / FAX (561)-750-1452

OAKS @ PALM AIRE
WATER DISTRIBUTION & SANITARY SEWER DETAILS
POMPAÑO BEACH, FLORIDA

DATE	06/12/23
DRAWN BY	RHT
F.B./ PG.	N/A
SCALE	n.t.s.

RYAN D. WHEELER
PROFESSIONAL ENGINEER
LICENSE NO. 71477
STATE OF FLORIDA
FOR THE FIRM
DATE Apr 02, 2025

JOB #10326
SHT. NO.
WS.03
OF 8 SHEETS